

What's in the Box

Redondo Face



Hardware

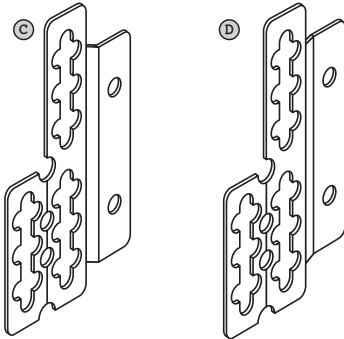


x(6)



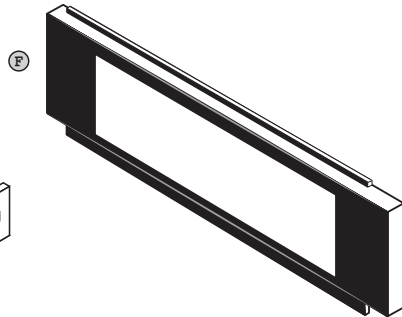
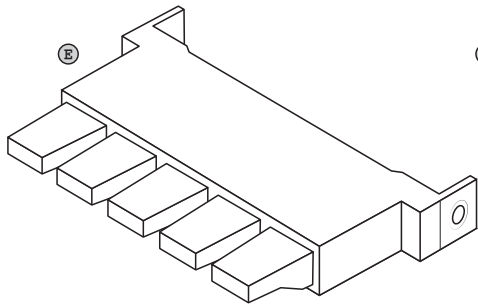
x(4)

NOTE: Two of the small screws(A) will be packaged in your Push-Button box.

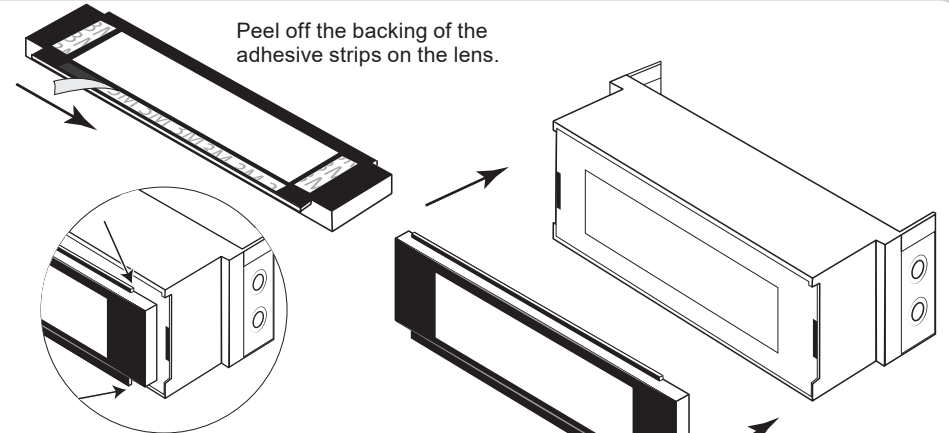


Additional Parts

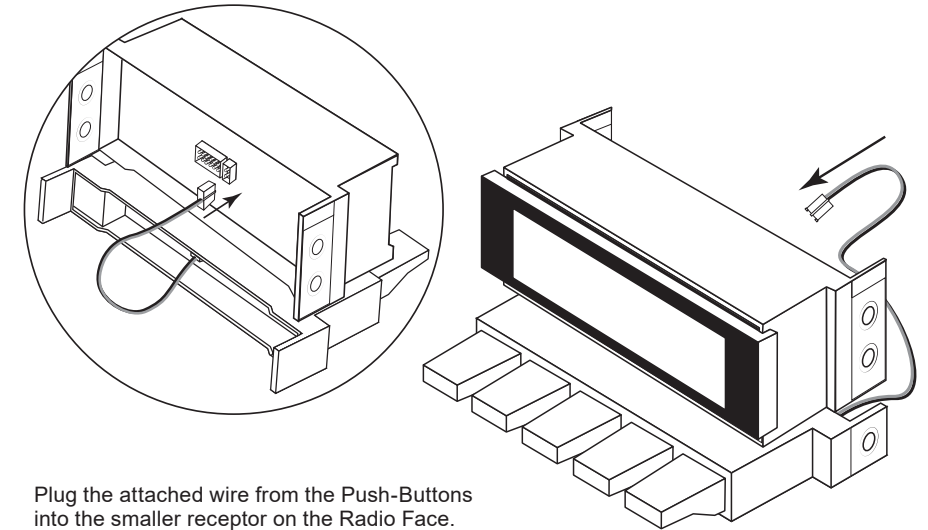
NOTE: Push-Buttons and Lens are packaged separately.



Installation



Line up the notches on the top and bottom of the display face with the notches on the lens, and press firmly to apply.

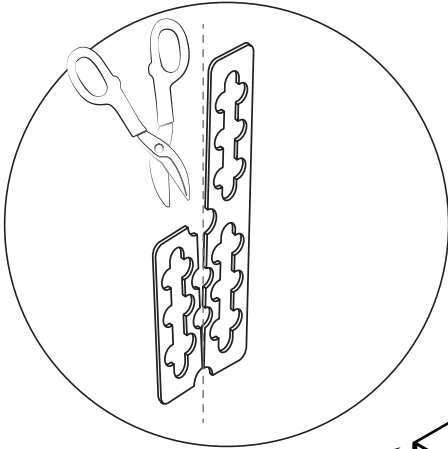


Plug the attached wire from the Push-Buttons into the smaller receptor on the Radio Face.

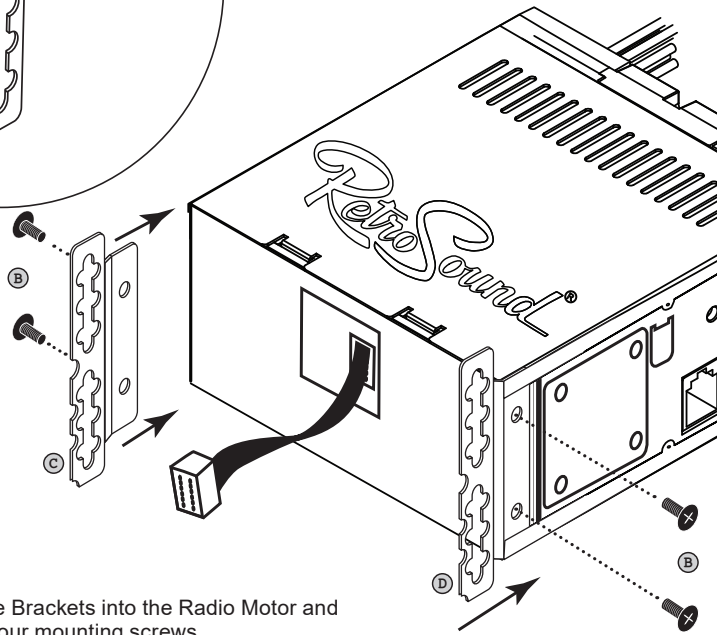
Refer to the user manual included in your motor box or on our website for more comprehensive instructions.

Installation (continued)

The Control Face Brackets have an additional tab left for fitments that need the button assembly to protrude further than the Radio Face and should be removed for most installations. Before removing the additional mounting tab, determine the needed depth for your Push-Button assembly to ensure the additional tab is not required. If the additional tab is not required, use a pair of tin snips to remove it.

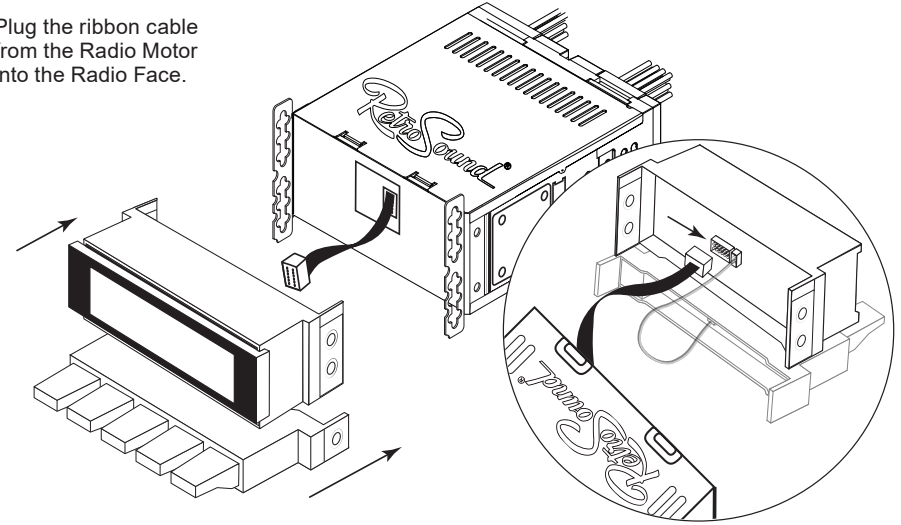


CAUTION: Do not attempt to break off the additional mounting tab by hand. The tab must be cut with tin snips. Bending the brackets by hand or with pliers will damage them.

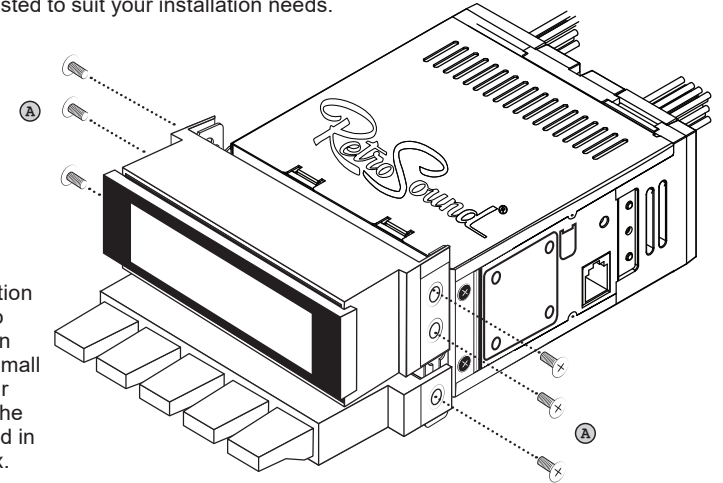


Place the Control Face Brackets into the Radio Motor and secure them with the four mounting screws.

Plug the ribbon cable from the Radio Motor into the Radio Face.



NOTE: The Control Face Brackets have multiple mounting holes so that the height of the Radio Face and the Push-Button assembly can be adjusted to suit your installation needs.



Complete the installation by securing the Radio Face and Push-Button assembly with the 4 small screws located in your Radio Face box and the 2 small screws located in your Push-Button box.

Refer to the user manual included in your motor box or on our website for more comprehensive instructions.